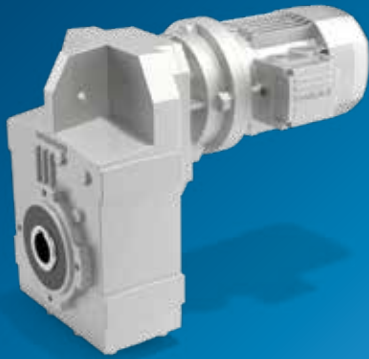


# Helical Parallel-Shaft Gearmotors & Units



## F Series

The F Series is an outstanding solution for customers looking for a drive that can maximize mounting flexibility. Thanks to the housing's lateral holes, the F Series can also be side mounted directly into the machine, in addition to all the conventional mounting positions. This gearmotor guarantees elevated efficiency, reliability and low-noise operation. High torque density, a range of wide gear ratios and a compact design complete the F Series' characteristics.



ATEX GEARBOX AVAILABLE

### Gear ratios

- 6.4 ... 2,099

### Mechanical rating

- 0.09 ... 123 kW

### Motors

- Input with solid shaft
- Input with e-motor coupling:
  - M, ME, MX (compact asynchronous)
  - BMD (servo permanent magnet)
  - BSR (IEC reluctance)
  - BN, BE, BX (IEC asynchronous)
  - BS (IEC single phase)

### Motor options

- Thermistors and thermostat sensors
- Independent forced cooling
- Incremental, sin/cos absolute single/multi-turn encoders
- Tropicalization
- Anti-condensation heaters
- Backstop

### Main options

- Long-life lubrication (Sizes from 10 to 40)
- Gearbox supplied with oil (Size 50)
- Surface protection up to C5
- Fluoroelastomer oil seals

### Key benefits

- Cost-effective solution
- Minimized mounting space
- Robustness
- Reduced standard backlash
- Highly dynamic, energy-saving solution

### Key features

- Lateral holes for side mounting
- Space-optimized design
- Compact motor coupling
- Unibox housing
- Forced gearshaft coupling
- Servomotor coupling
- Wide ratio range (4 Stages)
- Atex - gearbox for explosive environments 2G/2D

### Torque (Nm)

